

YOTSPACE

OCEAN ODYSSEYS



info@yotspace.com | www.yotspace.com | +61 7 5620 4336



Motor yacht Belle, launched in 2016, is a luxurious vessel with impressive features. With a length of 30m, this yacht offers ample space and comfort for its guests. One of its most notable features is its overnight capacity of 10 guests, making it ideal for group getaways or family vacations.

Another impressive feature of Belle is its capacity to host up to 36 guests for special events and celebrations. Whether it's a corporate event, a wedding, or a birthday party, this yacht provides a luxurious and unforgettable experience for all guests.

Being a European luxury yacht, Belle has been designed with modern, elegant touches that create a warm and welcoming atmosphere. From the luxurious cabins to the spacious deck areas, every detail has been carefully thought out to provide guests with maximum comfort and style.

Overall, Belle is a stunning vessel, perfect for anyone who wants to experience the ultimate luxury yacht charter experience.



SPECIFICATIONS

VESSEL SPECIFICATIONS

Length: 29.9 m / 98 ft Builder: Moonen Yachts, Netherlands Model: No. 198 Moonen Matica Year: 2016 Refit: 2023 Beam: 7 m / 23 ft Draft: 2 m / 6'7 ft Gross tonnage: 200GT Cruising speed: 11 knots Maximum speed: 13 knots Design: Naval: Diana Yacht Design B.V. Interior - Adam Lay Studio Exterior - Rene van der Velden Engines: 600 HP, Twin, 2016, C18 ACERT DITA, CAT

WATER SPORTS - TERM CHARTER

Lilypad, flight board, iAqua, Snorkelling Equipment, Waterskis, Wakeboard, SUPs.. Availability subject to location

WATERSPORTS - DAYCHARTER

Lilypad & 2 x SUPS included in 4 hour yacht hire
Aquabana ocean pool - \$1000 min 4 hour charter
Lifeguard fees apply

CAPACITY

Cruising capacity: 36 guests
Overnight Capacity: 8 recommended, 10 maximum
Crew: 5, plus wait staff for events

CABIN LAYOUT

4 guest suites, including 1 master stateroom, 1 VIP stateroom & 2 twin cabins

LOCATIONS

November - May: Sydney / Pittwater*
June - July: Shipyard
August - October: Whitsundays*
Late October- Late November - FNQ*, Magnetic Island, Lizard Island Cairns, Port Douglas

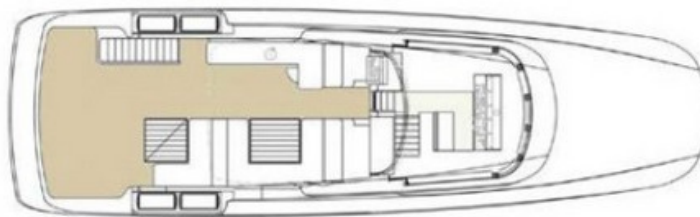
*relocation fees apply, POA



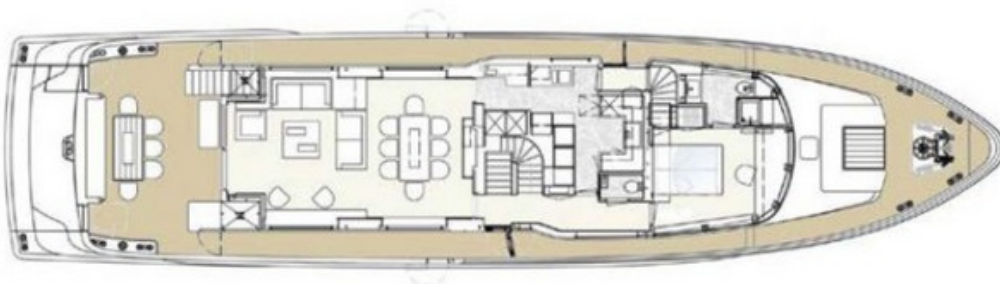
DECK LAYOUT



SUN DECK



MAIN DECK



LOWER DECK



DAY CHARTER RATES

HOURLY CHARTER RATE

Minimum 6 hours (QLD)

Low Season (Mar - Oct)

0-36 guests

\$2800 / hr

3 hour minimum

High Season (Nov - Feb)

0-36 guests

\$3000 / hr

4 hour minimum

INCLUDES

Vessel hire, GST, Fuel, Marine Crew

EXCLUDES

Catering, Beverages, Wharf Fees, Wait Staff, Chef Fees, Lifeguard Fees



DAY CHARTER RATES

WAIT STAFF

1 wait staff is required for every 10 guests
\$400pp for 4 hours
\$100pp per hour for every additional hour

WHARF FEES

\$50 per wharf visit

Available wharfs:

Casino Wharf

King Street

Aquarium

Eastern Pontoon

Double Bay Ferry Wharf

Rose Bay Public Wharf

Mosman Bay Ferry Wharf

Pyrmont Bay (End of Harris St)

Wharf fees may apply outside of Sydney POA

SURCHARGES

Surcharges apply for public holidays and special events.

Public holiday surcharges: 25% on yacht hire, food and beverage packages, 100% on chef, lifeguard and wait staff fees

Special Events include: Australia Day, Boxing Day, Christmas Day, New Years Eve and New Years Day.

All prices for special events are POA

CATERING

Starting from \$88pp

Canapé dining

Silver canapé package - \$88pp

Gold canapé package - \$108pp

Platinum canapé package - \$128pp

Buffet dining

Gold buffet package - \$128pp

Platinum buffet package - \$148pp

Fine dining

Fine dining - \$160pp

CHEF FEES

\$500 for 4 hours

\$120 per hour for every additional hour

BEVERAGES

Gold Package \$100pp

Premium Package \$130pp

pricing based on 4 hours

Beverage selection subject to availability

SWIMMING

All in-water activities require a lifeguard to be employed for safety at the charterers expense. Anyone who wishes to participate in any water activities will not be permitted to consume any alcohol.

\$450 for a 4 hr charter

\$100 per additional hour

TERM CHARTER RATES

Up to 8 guests

1 night	\$19,000 + 10% GST + 30% APA
2 nights	\$40,000 + 10% GST + 30% APA
3 nights	\$55,000 + 10% GST + 30% APA
4 nights	\$70,000 + 10% GST + 30% APA
5 nights	\$80,000 + 10% GST + 30% APA
6 nights	\$90,000 + 10% GST + 30% APA
7 nights	\$100,000 + 10% GST + 30% APA

Specials for overnight Sydney / Pittwater & Whitsundays

2 night \$38,000 inclusive GST + 30% APA

3 nights \$48,000 inclusive GST + 30% APA



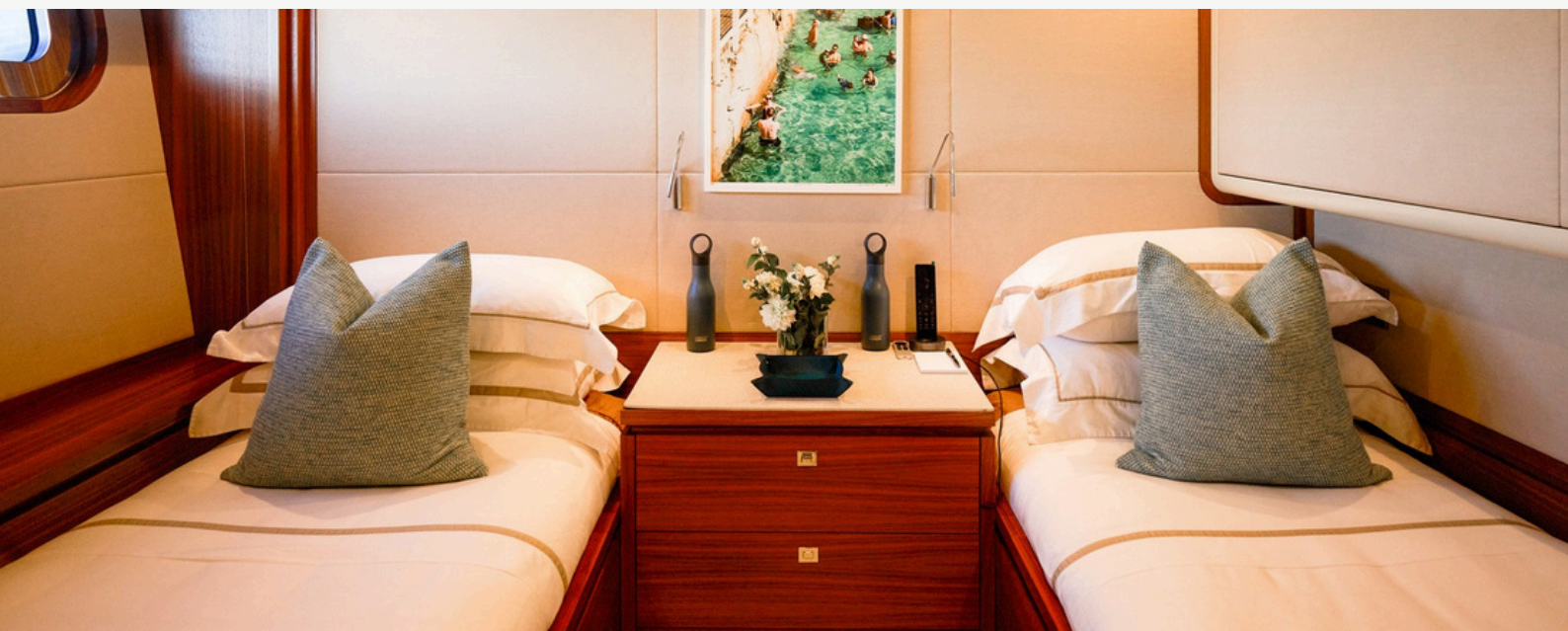
TERM CHARTER RATES

APA

30% APA (advanced provisioning allowance) covers the cost of the following and any funds not spent are refunded at the end of the charter.

APA covers:

- All provisions provided based on client preference sheets
- All beverages and alcohol provided based on client preference sheets
- Fuel consumed during duration of charter as specified on charter agreement
- Some itineraries may incur a relocation fee and will be POA
- All shore-based activities
- Special requests made by the charterer which are not supplied by the yacht as per the charter agreement
- Additional guests for day or evening events
- Speciality water sports not provided by yacht







VIP SUITE







TWIN CABINS









YOTSPACE
OCEAN ODYSSEYS

info@yotspace.com | www.yotspace.com | +61 7 5620 4336